

## Pastor's Corner

### Brighten the Corner Where You Are

Pastor Tom Philipp



We all have little things that bother us but do not seem to bother others. The Session has become aware that one of my concerns is to have a light on our sign board and on our steeple. I want people in the area, particularly anyone driving up or down South Country Road, to know that we are here, alive and functioning!

Well, I have noted that for several weeks "the lights are out." We know what the problem is but the fixing has yet to take place. Maybe I was in a particular mood the other night when I noted the dark corner again as I was driving past the church. As I waited for the stop light to turn green at our church corner, I sat there in my car singing a song I learned in Sunday School titled "Brighten the Corner Where You Are." The words of the chorus go:

*Brighten the corner where you are!  
Brighten the corner where you are!  
Someone far from harbor you may guide across the  
bar;  
Brighten the corner where you are!*

words: Ina D. Ogdon, 1913  
music: Charles H. Gabriel

Upon getting home, I sat down at my digital piano and started playing and singing it with gusto, the melody being such a simple tune it was not hard for me to find the right keys!

After playing the chorus through several times, I realized I did not know the verse to this old gospel song. So I went on line to check it out. Before sharing those words with you, let me tell you why they meant a great deal to me and why I feel they contain a message we need to hear as a Congregation.

At our July Session meeting we once again looked at the 'reality factor': we are a congregation of just 41 members where expenses typically run higher than our income. Though we try to cut expenses, this is difficult. Sometimes unexpected expenses occur such as the need recently to remove some dead trees at both the church and at the manse. If not removed, could cause probable serious damage, and soon. We need to increase income, but the only way to do that is finding new sources of income. The Session decided to schedule a special retreat, at which we would look at this

Continued, page 2

## Sophie Walton - Pulpit Bible, Easter 1940

Throughout the church are various items inscribed as being "donated by" or "in memory of." Have you ever wondered who these people were? As space permits, we will from time to time mention them.

In the narthex of the church, on the antique harmonium, are two symbols of our faith – a baptismal bowl and pitcher, and an old pulpit bible. The bible is inscribed as being donated by Sophie Walton.

(Ida) Sophie Porter Todd was born in Morrisania (now part of the Bronx) on December 23, 1858. She was a daughter of Joshua Todd, a lawyer, and Eliza Parmelee (Blake) Todd. She graduated from Mount Holyoke College in 1879, and was then a teacher in New York City in 1880-1882 and a tutor in 1882 and 1883.



On October 10, 1883, she married John Douglas Walton, and on July 16, 1890, they had a son, William Douglas Walton, their only child. After her marriage, she attended Columbia University beginning in 1899; she graduated in 1902. By 1916, the family had a residence in Bellport.

Who's Who in America reports that she was "interested in educational, philanthropic and church activities, the cause of child labor, social service, art, and literature." She was a member of the Comparative Literature Society and a former member of the New York Mycological Club. She was a strong proponent of women's suffrage.

She served as vice-president and acting president of the Prothumian Society, the woman's Graduate Club of Columbia University, and as treasurer and chair of the building and finance committee of the Mt. Holyoke Alumnae Association. She was chairwoman of Drama Sorosis and a member of the Associate Council of the American College for Girls in Constantinople. ["Prothumian" is from the Greek word "prothumia" which means "an open mind, a disposition of mind free of prejudice and bias; or, a readiness, willingness, and eagerness of mind."]

Sophie Walton was first ordained an elder at the Bellport Presbyterian Church.

(Between 1856 and 1901, the South Haven and Bellport churches shared a minister. In March 1900, Rev. Frederick Van Duzer Frisbie married a young Bellport woman and left both congregations the following month. Perhaps due to decreased attendance, Bellport was not able to meet its share of support for the pastor who followed, and in 1901 asked to end the shared arrangement. In July 1917, the Presbytery attempted to get the two congregations to share one minister again, but at a combined meeting of both sessions, the two sessions voted unanimously against doing so. The two congregations did not again share one pastor until August 1931. The Bellport congregation seems to have gone into further decline, and its session appears to have ceased to meet any longer in 1939.)

Sophie Walton transferred her membership to South Haven and in April 1940 she was elected to be an elder of South Haven. She served until January 5, 1945.

Sophie's husband, John Douglas, died at age 77 on October 29, 1937. Sophie died on August 22, 1947. Interment was at Bellport on August 24, 1947.

## Pastor's Corner, continued

matter at length with no other item on our agenda. We will look seriously at "what is our mission in the year 2008 and beyond". For the past few weeks and in our weekly church emails we have sought suggestions from the congregation.

When The Rev. Ellen Marquardt, the Presbytery's Interim Executive Presbyter joined us on "Celebration of Small Church Ministry Sunday", she shared examples of a couple of churches that looked at their particular surroundings as a challenge and opportunity to enter into some new forms of ministry. Here at Old South Haven we see ourselves located right across the street from a high school and just down the road from two health related facilities. When the Session at its retreat last year looked at the demographics for our area, we discovered that people in our area show strong interest in music, art, and other cultural activities. We also discovered that there is a large senior citizen population. How should our ministry in the future relate to these factors?

Now let me share with you the three verses to "Brighten The Corner Where You Are."

*Do not wait until some deed of greatness you may do,*

*Do not wait to shed your light afar;  
To the many duties ever near you now be true  
Brighten the corner where you are.*

*Just above are clouded skies that you may help to clear,*

*Let not narrow self your way ebar;  
Though into one heart alone may fall your song of cheer,  
Brighten the corner where you are.*

*Here for all your talent you may surely find a need,  
Here reflect the bright and Morning Star;  
Even from your humble hand the Bread of Life may feed,*

*Brighten the corner where you are.*

The poet Helen Steiner Rice, reflecting on this gospel song has penned the following:

*We cannot all be famous  
or be listed in "Who's Who",  
But every person, great or small  
has important work to do.  
For seldom do we realize,  
the importance of small deeds.  
Or to what degree of greatness,  
unnoticed kindness leads.*

*For it's not the big celebrity  
in a world of fame and praise  
But it's doing unpretentiously,  
in undistinguished way.  
The work that God assigned to us,  
unimportant as it seems,  
That makes our task outstanding,  
and brings reality to dreams.*

*So do not sit and idly wish  
for wider, new dimensions,  
Where you can put in practice  
your many good intentions.  
But at the spot God placed you,  
begin at once to do,  
Little things to brighten up  
the lives surrounding you.*

*If everybody brightened up  
the spot where they're standing  
By being more considerate  
and a little less demanding,  
This dark old world would very soon  
eclipse the evening star.  
If everybody brightened up  
the corner where they are!*

So let us turn on the lights! Not just the lights on the sign and steeple, but the light that we are as a congregation, set in this particular place with the challenges of ministry to those around us, and let us Brighten This Corner Where We Are.

Thomas J. Philipp

## Presbytery Visioning Retreat

An invitation has been extended to ministers, Elders, deacons, and church members of the congregations of the Presbytery to its second Visioning Retreat. The event will be held at Old First Presbyterian Church of Huntington from 10 am to 4 pm (registration and refreshments at 9:30am) on Saturday, September 20. Sean Moran accompanied Pastor Tom at the first visioning retreat. The purpose of the event is to help shape a vision for the life and mission of the Presbytery in a partnership with its congregations. The invitation says: "By God's grace, we will emerge from that time of discernment with a clear understanding of where God is calling us as a Presbytery and some possible responses to that call." Please let Sean or Pastor Tom know of your interest in attending. Transportation will be provided.

## We Welcome a New Carriage House Tenant

Arrangements have been completed and a lease signed with Rachel Bohlman to occupy the Carriage House. Ms. Bohlman is a music teacher who will be giving music lessons on the Viola, Violin and Piano.

She is a resident of Bellport and teaching in the main room during the following times:

Monday	2:30 pm to 6:00 pm
Tuesday	6:00 pm to 7:30 pm
Wednesday	2:00 pm to 4:00 pm
Thursday	3:00 pm to 8:00 pm
Friday	6:00 pm to 8:00 pm
Saturday	9:00 am to 2:00 pm

We extend best wishes to Ms. Bohlman in this endeavor.



## Board of Deacons

**Kappy Tilney**

As we wind our way through the warm summer days, the Deacons are thinking of a potluck supper in the fall. More anon!

"Thinking of You" cards to members and friends and "Welcome" cards to visitors continue to be sent.

The wildflowers on the Communion Table this summer are the gift of Helen Starke.

Thank you, Helen, for brightening the sanctuary and our spirits with God's beautiful bounty!

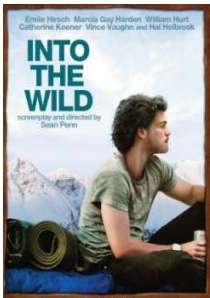
## Food Shelf

As we have read in the news, food pantries are struggling. In the past, Old South Haven has contributed generously to St. Joseph the Worker's much-needed ministry. When you purchase groceries, please consider those needs and bring non-perishable food items on the first Sunday of the month (or any Sunday!). When the basket is full, the food will be delivered to St. Joseph. They are always so appreciative.

## Film Series resumes in Fall with

### Into the Wild

**Monday, Sept 8., 7 pm, in the Gallery**



Chris McCandless (Emile Hirsh) is a smart college graduate but one with altruistic dreams. Chris decides instead of following the routine, he'd rather give his life savings to charity, burn all of his identification, and hitchhike across America trying to get to Alaska desiring to escape society and get back to nature. He hitchhikes, hops trains, and hangs out with hippies (Catherine Keener and Brian Dierker). He also works briefly with a farmer (Vince Vaughan), and is befriended by a widowed leather worker (Hal Holbrook). He enjoys his liberating freedom, but his parents (Marcia Gay

Harden and William Hurt) worry that they don't know where he is and are crushed by his disappearance. Chris makes it to Alaska, where he delves further into nature. He hikes out to a far and remote campsite and discovers an abandoned bus. He decides to set up life there and manages to survive there for a few months living off the land -- living his version of the American Dream. But as his supplies dwindle he becomes trapped by the land he so valiantly sought out leading to tragedy.

## Condolences To The Barry Family

We extend our sympathy to Janet Barry and the Barry family upon the death of Janet's father, Alan Thomson, on August 9. The funeral was held at Bellmore Presbyterian Church where the Thomsons were members. Pastor Tom participated in the funeral service..

## Thank You Natasha

Worshippers on Sunday, August 10, were greatly moved by the playing of flutist Natasha Bertrand, accompanied by Danny Corneliussen on piano. She played "Adagio non troppo from Concerto in G. Major for Flute, K.313" by Mozart and "Allegro maestoso from Concerto in G. Major for Flute, K. 313" by Mozart.

Natasha is the granddaughter of Catherine Kellogg. It is hard to believe that she is a high school student. At the invitation of Pastor Tom, Natasha indicated she is willing to play a recital for Old South Haven Presbyterian and the Brookhaven/Bellport community sometime in the near future.

## Session Retreat

The Session will be having a Saturday morning Retreat on August 23. Serious consideration will be given to the on going ministry and mission of Old South Haven Church. This will include some specific program activities or mission endeavors, and how these endeavors can be designed to aid in producing income.

The Session welcomes your suggestions.

## Sunday School

**Darcy Stevens**

Many thanks to all who shared in the Sunday School / All Church Picnic in June, and special thanks to those who were "clues" in the treasure hunt.

Tentative start date for '08-'09 Sunday school is Sept 14. All kids and helpers welcome!

## Long Island Council of Churches' Annual Convocation

On Saturday, September 27, the Long Island Council of Churches will hold its annual convocation at First Baptist Church in Riverhead. The theme is "Rising Up Out of Poverty," and will run from 9:00am to 12:30pm. Registration and coffee at 8:30am, \$10 donation.

The program will begin with the Bible study: "A prophetic word regarding poverty," led by Rev. Lorraine De Armitt, Pastor of the United Methodist Church of Southold. Speakers will include: Karen Olsen of Family Promise (serving homeless families), Rev. Charles Coverdale, host and member of Long Island Organizing Network, Dr. Richard Koubeck of Huntington Housing Coalition, and Neelofer Chaudry, Advocacy Director of Micah (a project of LICC and others addressing poverty concerns on Long Island). "We will concern ourselves with how churches can help people get out of poverty. Beginning with bible study, listening to the work of advocates in the field, we will finish the morning looking at existing resources in particular locations, and help participants think in new ways about escaping poverty." Please let Pastor Tom know if you wish to attend. Transportation provided.

## Congratulations

We extend our congratulations to Steven Welgoss and Karen Walsh who were married in our sanctuary on Saturday, August 9. Pastor Tom officiated and Karen's two daughters, Erika and Rebecca read the scripture lessons. Mark Hemann, Steve's step father, sang and a brass quartet played, to begin and end the service. The couple resides at 15 Enfield Lane in Kings Park.

## Minutes Approved "Without Exception"

Congratulations to Sean Moran for having the Session Minutes approved by the Presbytery's Committee on Session Records "without exception." We are thankful for the time and diligence Sean brings to the task of Clerk of Session.

## OSHPC to Host April Recital

The South Country Education Foundation (SCEF) will be holding its 2009 Spring Recital in our Sanctuary. SCEF has made this request through Daryl Jordan and the Session has approved. The recital will be a shared vocal and organ recital, with doctoral candidates in music at SUNY StonyBrook invited to participate. Our own organist, Daniel (Danny) Corneliussen, will be providing piano or organ accompaniment. The date will be Saturday, April 4, 2009. Concert attendees will be asked for a donation that will be used to fund the SCEF Summer Scholarship Program. SCEF's website is scefononline.org.





## Music Department

**Danny Corneliusen**

It will soon be time for a new school year and the fall. As always, I am working on my playing, but also thinking of my position as your organist/choir director. After a brief break, choir rehearsals will resume the first week of September. It will be great working on "new" music and seeing our singers of whom I am quite fond. It is a blessing to be at Old South Haven Church. I feel at home here and, as of now, plan to remain organist through the 2008-2009 school year. I graduate from the Masters of Music program at SUNY Stony Brook in May 2009.

Old South Haven is a musically rewarding place, and provides an atmosphere that is open and caring - which is what a church should strive to be. More than once I have been upset and offended at services elsewhere where people have turned their backs on others. It is hurtful to be insulted by words that are unfair, untrue, and exclusionary toward people who are homosexual. Old South Haven aims to welcome each and every person justly.

As far as plans go for the instruments at Old South Haven, more work is anticipated on the newly purchased piano. I am thankful for this instrument. We are especially mindful of opportunities for our church to be a venue for concerts serving the larger community. This means not only having good instruments but maintaining them. I know that funding is always an issue, however, we must be optimistic.

Here's to our well-being, not only that of our music department, but of our whole church and community.

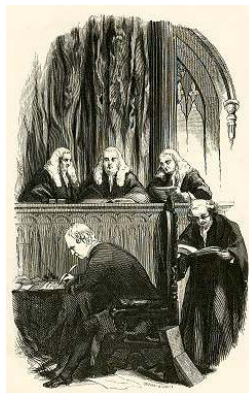
Thank you so much.

## Morning Worship Assignments

	<b>Greeter</b>	<b>Lay Reader</b>	<b>Coffee Hour</b>
<b>Aug 24</b>	J. Frankie	L. Majowka	D. Stevens
<b>Aug 31</b>	J. Sullivan	J. Deitz	H. Altomare
<b>Sept 7</b>	W. Scott	J. Neal	L. Scott
<b>Sept 14</b>	S. Moran	L. Majowka	P. Light
<b>Sept 21</b>	J. Sullivan	S. Welgoss	C. Kellogg
<b>Sept 28</b>	K.Morgan	N. Best	P. Light
<b>Oct 5</b>	W. Scott	L. Scott	H. Altomare
<b>Oct 12</b>	K. Barry	J. Barry	A. Wiswall
<b>Oct 19</b>	J. Frankie	L. Majowka	L. Majowka
<b>Oct 26</b>	K. Morgan	N. Best	D. Stevens



Old South Haven Presbyterian Church  
 Corner South Country & Beaverdam Rds.  
 Brookhaven, NY  
[OldSouthHavenChurch.org](http://OldSouthHavenChurch.org)  
 (631) 286-0542  
 Pastor: (631) 289-2030  
[info@OldSouthHavenChurch.org](mailto:info@OldSouthHavenChurch.org)  
 Linda Scott, editor (631-286-2003)



Our Clerk at work

## Clerk of Session

**Sean Moran**

I have some events that members might be interested in:

**Little Shelter Animal Shelter** in Huntington is having their annual "Pet-A- Palooza" on August 16 and 17 from 9am to 3pm with a "Blessing of the Animals" service at 3pm on August 17. There are 100's of animals for adoption, children's games and prizes, huge Chinese Auction, BBQ, Search and

Rescue Demonstrations, Pet Health Care Tips, Ask the Trainer, Pets on Parade and other activities. Many cats and dogs are available for adoption. The shelter is located at 33 Warner Road in Huntington. For details call (631)368-8770 ext. 206 for details.

**Shinnecock-Sewanaka Society's** 13th Annual "Nation with Nation /Peace in Healing" Gala Fundraiser will be honoring Assemblywoman Patricia Eddington.

This event will be held on Saturday, September 13, 2008. @ 304 Station Road, Bellport, 6-8pm. The evening will include auction and raffle, music and food. \$30.per person. For more information or to buy tickets call (631)286-2262. Proceeds benefit the 'Society', a 501c3 grassroots Native American Organization

On October 20, 2008, The Shinnecock - Sewanaka Society will be holding their annual Golf Tournament at the Bellport Country Club in Bellport Village honoring the Late Norman Vincent Carle and Peter Elmer Smith. The cost per golfer is \$175 which includes a continental breakfast, dinner, 1 raffle ticket to their grand prize, green fees, and golf cart. There will be many prizes and a special presentation of the Shinnecock History of Golf. If you wish to only attend the dinner and program, the cost is \$75.00. Call 631-286-2262 for reservations by October 15th. Proceeds will go to support the Society's Restoration Building Fund, the Fund for Education of Native Young People and the Peter Smith Foundation. Sponsorship is available for tee (\$50), Business Card Journal Ad (\$30), or both (\$75). Contributions to the society are greatly appreciated. Deadline for golf applications is October 13. Any questions, please call Janine Tinsley-Roe at the Shinnecock - Sewanaka Society @ 631-286-2262.

## Church Yard Sale

**Save the date! Saturday, September 13.**

Look through your attic, basement and garage for forgotten items that could be someone else's treasure! Many hands are needed for set up, selling and clean up, as well.

As in the past we are very dependent upon income from our yard sales for our continued operation. We hope everyone gets behind and supports this sale